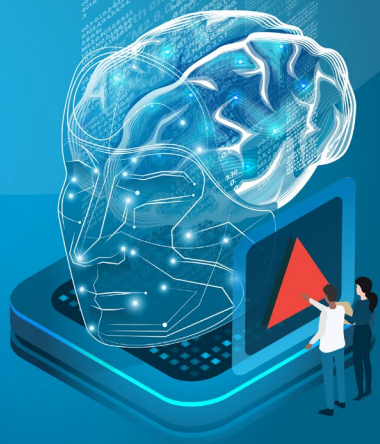


# Our AI-powered intelligence layer for life insurance



## Cut operational costs while accelerating everything else

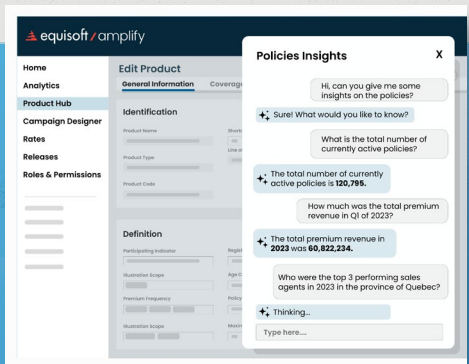
Equisoft/amplify is a comprehensive AI-enabled solution that eliminates manual bottlenecks, automates repetitive tasks, and dramatically accelerates policy operations.

## 30+ years data and insurance expertise

Reduce cost and processing times **from months to weeks.**

Your teams **stop fighting fires** and **start focusing** on work that **drives growth.**

## Components that drive measurable results



### 1 Product hub

Eliminate IT bottlenecks for product updates. Business teams control product definitions, rates, and releases directly—cutting time-to-market from months to days and reducing dependency on expensive development resources.

### 2 Case management

AI agents automate repetitive tasks like gathering medical requirements, freeing underwriters and claims staff for high-value decisions. Unified workflows eliminate redundant data entry and reduce processing time across the policy lifecycle, from underwriting to claims.

### 3 Document generation & management

Automate document creation and delivery—no more manual assembly or tracking. Event-driven workflows ensure the right documents reach customers at the right time, with instant audit trails that eliminate compliance scrambles.

### 4 Advanced analytics

Stop leaving money on the table. AI-driven analytics surface cross-sell and upsell opportunities that flow directly to agent portals and campaigns. Predictive insights identify retention risks before they become losses.

**Integrated architecture**  
**= compounding efficiency gains**

These aren't siloed tools—they're built on shared foundational layers of universal middleware and agentic AI. When components work together, efficiency gains compound: analytics insights trigger automated campaigns, case management actions generate compliant documents, and product changes propagate instantly across every system.

# Frequently Asked Questions

## [Q] How quickly will we see efficiency gains?

[A] The platform is designed for rapid value delivery. Business teams can launch campaigns in days instead of months. AI agents begin automating routine tasks immediately upon deployment. The phased implementation approach means you start realizing operational savings early—not after a multi-year buildout.

## [Q] How much can we reduce IT dependency?

[A] **Dramatically.** The Product Hub lets business teams manage products, rates, and releases without developer involvement. Campaign management, workflow configuration, and AI agent templates are all designed for business users. Reserve your technical resources for strategic initiatives instead of routine updates.

## [Q] Will AI actually reduce our workload?

[A] **Yes**—on the tasks that consume the most time. AI agents handle repetitive case work like gathering requirements and processing routine transactions. Advanced analytics eliminate manual report building with persona-based dashboards. Document workflows remove manual assembly and tracking. Your people are freed to focus on decisions that require human judgment.

## [Q] Can we control and audit AI decisions?

[A] **Absolutely.** Equisoft/amplify is built on augmented intelligence—AI assists human judgment rather than replacing it. Human-in-the-loop options let staff review and override AI recommendations. All decisions are fully auditable with documented reasoning, meeting model governance requirements regulators increasingly demand.

## [Q] Is it compliant and auditable?

[A] Compliance is built in, not bolted on. Complete audit trails support NAIC model audit rules and state requirements. Version control tracks every change. AI decisions are fully documented and overrideable. You'll spend less time preparing for audits and more time running your business.

## [Q] What's the integration effort?

[A] The API-first, event-driven architecture connects to major PAS platforms, CRMs, BI tools, and legacy systems including COBOL-based mainframes. You're not rebuilding your infrastructure—you're adding an intelligence layer that makes everything work better together.

## [Q] How is it priced?

[A] Pricing is tailored to your module selection and operational scale, structured to align with the ROI you'll realize. The phased approach spreads costs over time while delivering early wins.

## Ready to reduce costs and accelerate operations?

[Book a demo](#)

We'll show you how we can help you cut processing times, reduce manual workload, and drive measurable operational savings.